



**STAR TRANSIT**

*Connecting you to where you want to go.*

***Propose:  
Mesquite COMPASS Service Changes  
Addition of Mobility on Demand***

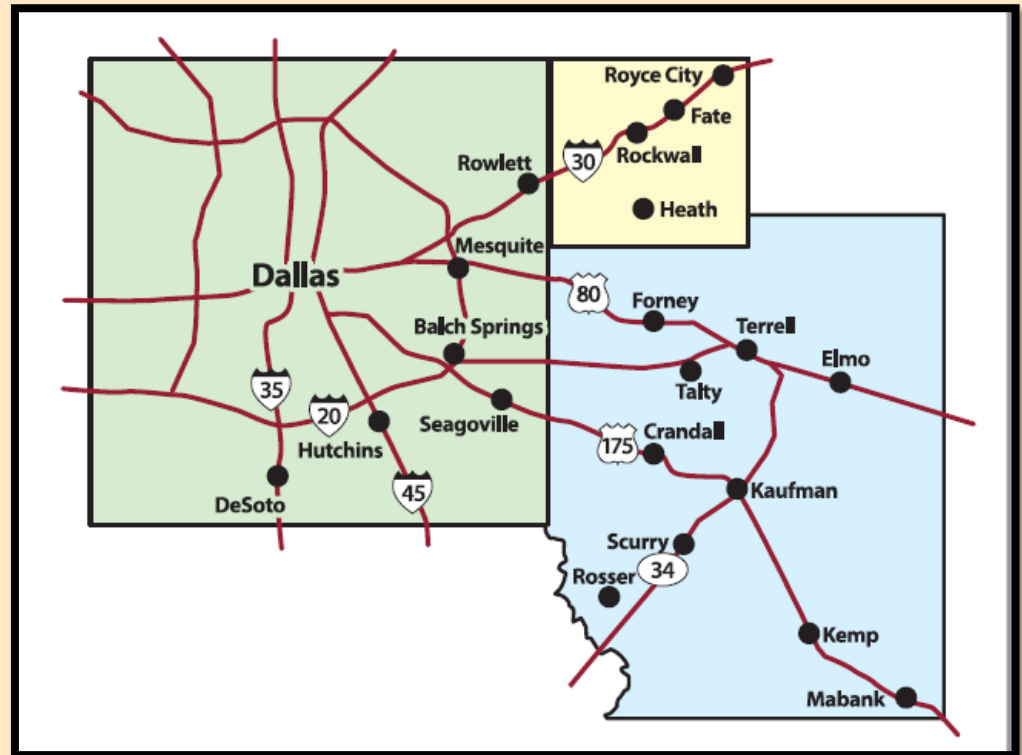
**7/22/19**

- **Explain** proposed service changes.
- **Receive** input from the public about the service.



- **STAR Transit** is a political sub-division of the state of Texas providing over **200,000 rides** per year with a **staff of 102** and a **fleet of 55+ vehicles**.
- Based in **Kaufman County** operating as a Rural Transit District.
- **Agreements in place with 10+ entities** (as big as Mesquite and as small as Fate) with service ranging from Royse City to Navarro County.
- Serving Mesquite, Hutchins, Balch Springs, DeSoto and Seagoville in Dallas County.
- 4<sup>th</sup> largest transit agency in greater North Texas, with **no dedicated sales tax**.
- **LogistiCare** Gold Star Provider (2015, 2016, 2017, 2018) and was named the **2017 Provider of the Year**.
- **2012 and 2019 Texas Transit Association Outstanding Rural Transit System.**

- Kaufman County
- Rockwall County
- Seagoville
- Balch Springs
- Mesquite
- Hutchins
- DeSoto



## Current Service Details

### Demand Response

- 6:00 am – 6:00 pm 10 Buses @ 8 Hours

### COMPASS

- 5:02 am – 9:00 am 2 Buses @ 4 Hours
- 3:29 pm - 7:16 pm 2 Buses @ 4 Hours

**96 Total Hours Daily**

***STAR TRANSIT***

*Connecting you to where you want to go.*

***Mesquite COMPASS***

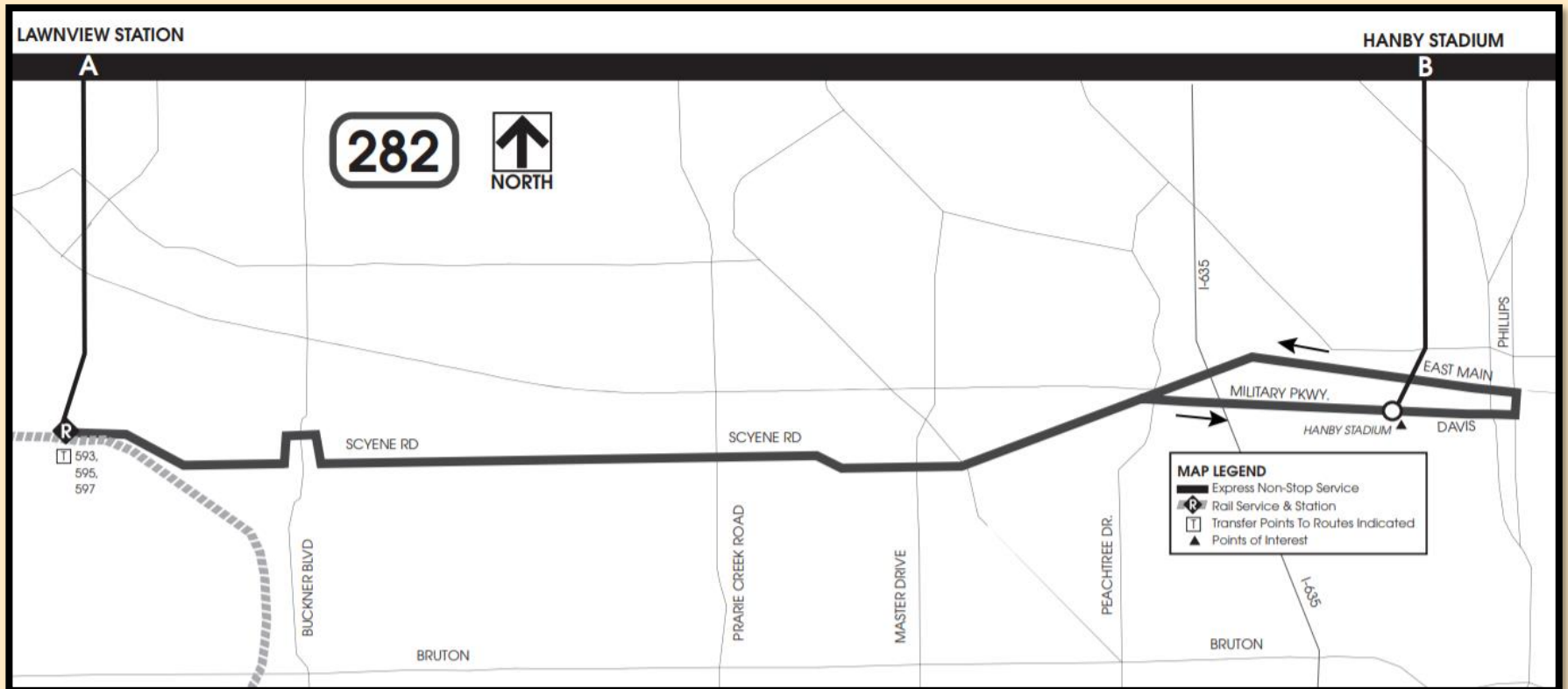
## ***Current Service Details***

- STAR Transit operates this weekday express bus service between Mesquite's Hanby Stadium and DART's Lawnview Station on the green line.
- The first bus leaves Hanby Stadium at 5:02 am & the last bus departs Lawnview Station at 6:56 pm.
- Peak period service operates every 30 minutes. No midday service.
- DART's fare structure is followed.

# Service Type: COMPASS

## Map

Connecting you to where you want to go.







Connecting you to where you want to go.

## Schedule

### WEST

MESQUITE PARK & RIDE		LAWNVIEW STATION	
5:02 am	<b>3:29 pm</b>	5:22 am	<b>3:51 pm</b>
5:35 am	<b>3:59 pm</b>	5:55 am	<b>4:21 pm</b>
6:03 am	<b>4:29 pm</b>	6:25 am	<b>4:51 pm</b>
6:33 am	<b>4:59 pm</b>	6:55 am	<b>5:21 pm</b>
7:03 am	<b>5:29 pm</b>	7:25 am	<b>5:51 pm</b>
7:33 am	<b>5:59 pm</b>	7:55 am	<b>6:21 pm</b>
8:03 am	<b>6:29 pm</b>	8:25 am	<b>6:51 pm</b>
8:33 am		8:55 am	

### EAST

LAWNVIEW STATION		MESQUITE PARK & RIDE	
5:39 am	<b>3:58 pm</b>	5:57 am	<b>4:18 pm</b>
6:06 am	<b>4:34 pm</b>	6:24 am	<b>4:54 pm</b>
6:39 am	<b>5:04 pm</b>	6:59 am	<b>5:24 pm</b>
7:06 am	<b>5:34 pm</b>	7:26 am	<b>5:54 pm</b>
7:36 am	<b>6:04 pm</b>	7:56 am	<b>6:24 pm</b>
8:06 am	<b>6:38 pm</b>	8:26 am	<b>6:58 pm</b>
8:36 am	<b>6:56 pm</b>	8:56 am	<b>7:16 pm</b>
9:00 am		9:20 am	

***STAR TRANSIT***

*Connecting you to where you want to go.*

***Revisions &  
Proposed Ideas***

## **Revisions**

**Beginning October 1 the following revisions will take place:**

- **DART Express Bus Route 282 = Mesquite Compass:**
  - No longer a DART route.
  - DART fare structure will no longer apply.
  - DART passes will not be accepted.
  
- **Fare:**
  - General public = \$1.00 each way
  - Qualified 60+/Veterans/Disabled Riders = No fare
  - October = No Fare

## ***Proposed Ideas***

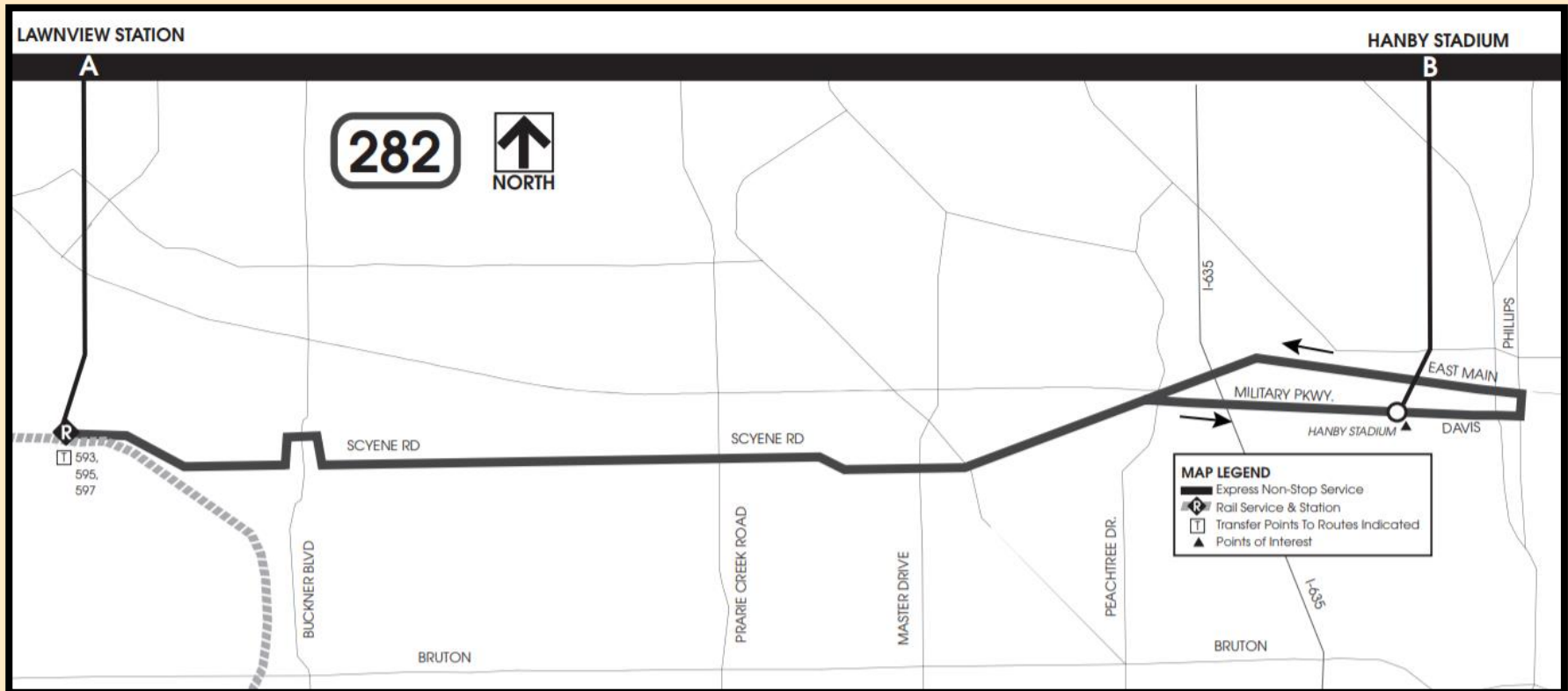
- **Option #1** - Keep route and reduce operating hours.
- **Option #2** - Add a Town East area stop to the current route, revise schedule to accommodate the addition.
- **Option #3** - Route from Town East area to Lawnview, no longer stop at Hanby.

## Potential Service Option #1

Connecting you to where you want to go.

Hanby Stadium

Lawnview



Trip Length – 8 Miles

Trip Length – 24 Minutes

## Potential Service Option #1

Connecting you to where you want to go.

05:02 – 08:03 · Every 60 min · 8 trips

	0	+21.5		0	+19.5
A	05:02	05:22	A	05:39	05:57
A	06:03	06:25	A	06:39	06:59
A	07:03	07:25	A	07:36	07:56
A	08:03	08:25	A	08:36	08:56

15:29 – 18:29 · Every 60 min · 8 trips

	0	+22.0		0	+20.0
A	15:29	15:51	A	15:58	16:18
A	16:29	16:51	A	17:04	17:24
A	17:29	17:51	A	18:04	18:24
A	18:29	18:51	A	18:56	19:16

# Service Type: **COMPASS**

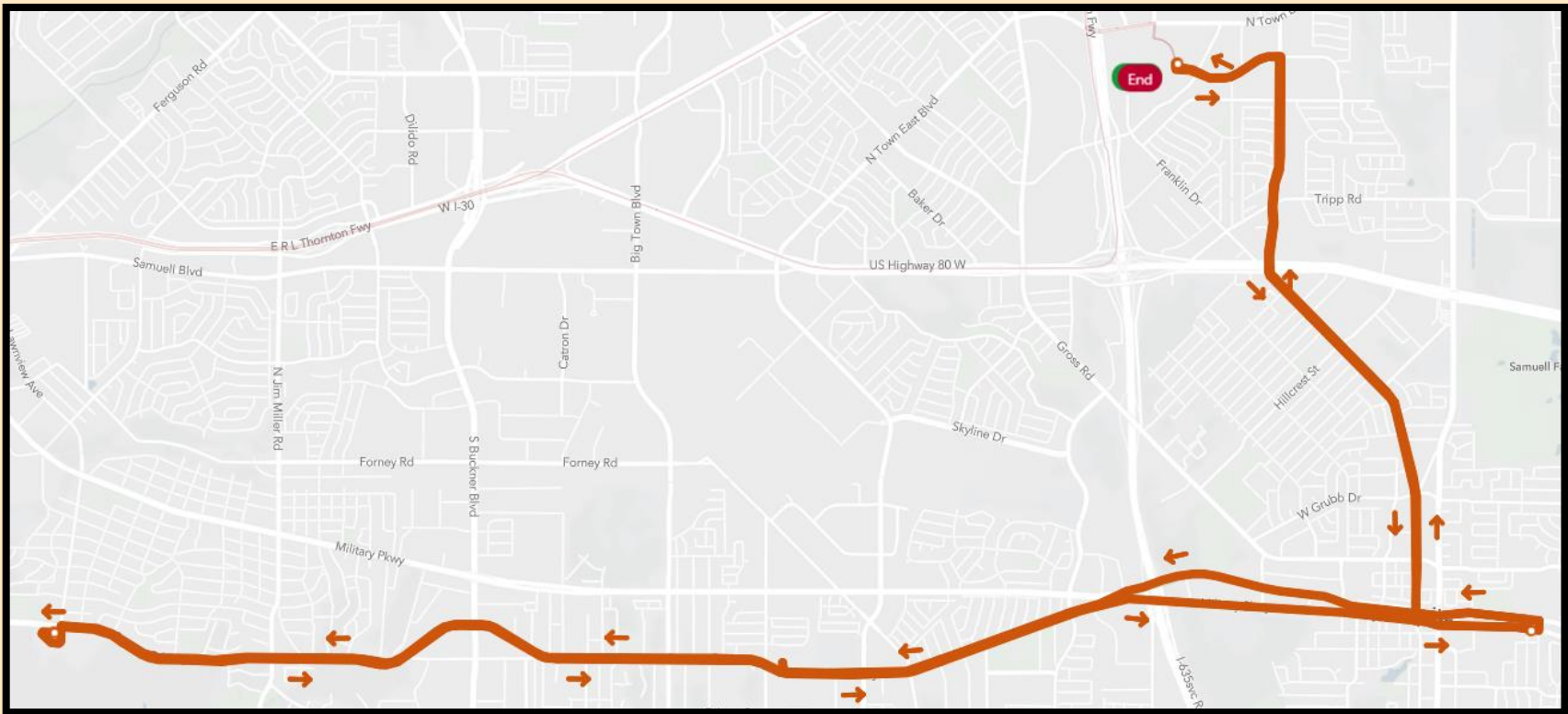
## Potential Service Option #2

Connecting you to where you want to go.

Town East area

Hanby Stadium

Lawnview



**Trip Length – 25 Miles**

**Trip Length – 60 Minutes**

## Potential Service Option #2

Connecting you to where you want to go.



04:45 – 09:15 · Every 90 min · 8 trips

	0	+15.0	+24.3
A	04:45	05:00	05:22
A	06:15	06:30	06:55
A	07:45	08:00	08:25
A	09:15	09:30	09:55

	0	+21.0	+14.0
A	05:39	06:00	06:14
A	07:06	07:27	07:41
A	08:36	08:57	09:11
A	10:06	10:27	10:41

15:15 – 18:15 · Every 90 min · 6 trips

	0	+15.0	+24.3
A	15:15	15:30	15:51
A	16:35	16:50	17:21
A	18:15	18:30	18:51

	0	+22.7	+14.7
A	15:58	16:20	16:34
A	17:34	17:57	18:12
A	18:56	19:19	19:34



# Service Type: **COMPASS**

## Potential Service Option #3

Connecting you to where you want to go.

Town East area

Lawnview



Trip Length – 20.6 Miles

Trip Length – 35 Minutes

## Potential Service Option #3

Connecting you to where you want to go.

05:00 – 08:04 · Every 61 min · 8 trips

	0	+22.0
A	05:00	05:22
A	06:02	06:25
A	07:03	07:25
A	08:04	08:25

	0	+22.5
A	05:39	05:59
A	06:39	07:01
A	07:36	08:00
A	08:36	09:00

15:29 – 18:30 · Every 60 min · 8 trips

	0	+21.3
A	15:29	15:51
A	16:30	16:51
A	17:30	17:51
A	18:30	18:51

	0	+22.0
A	15:58	16:20
A	17:04	17:26
A	18:04	18:26
A	18:56	19:18

## ***Proposed Timeline***

- July 22                      Public Meeting
- August 5                    Close of Public Comment period
- October 1                  Revisions implemented

***STAR TRANSIT***

*Connecting you to where you want to go.*

***Questions or  
Comments***



**STAR TRANSIT**

*Connecting you to where you want to go.*

***Mobility on Demand***

## Standard Service Model

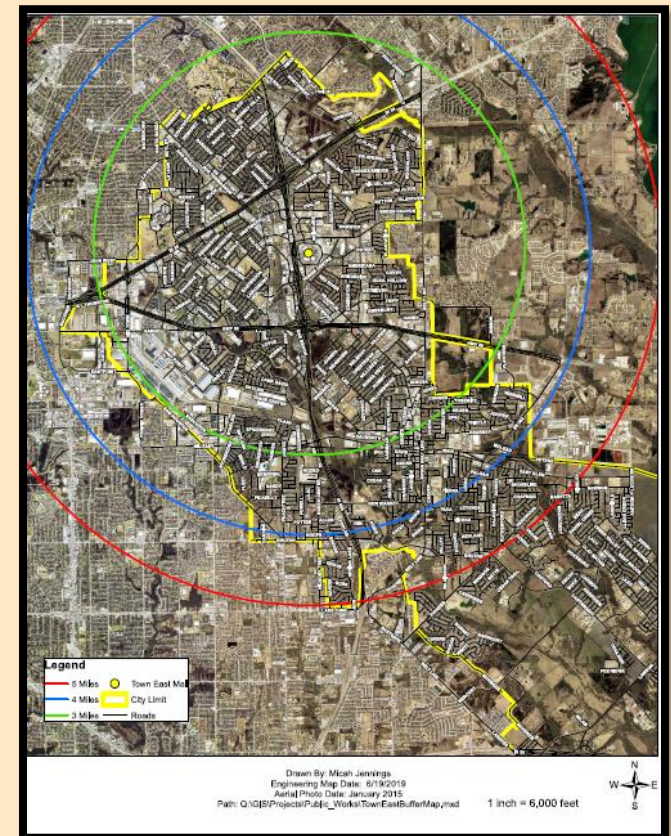
- Customer calls; We arrive within 15 minutes and provide service.
- Fare structure:
  - Rides within travel zone = \$3.00
  - Rides to a STAR Transit bus route within travel zone = \$1.00
    - i.e., Hanby Park & Ride
  - No fare discounts
  - Cash pay and prepaid option in place.
- Shared ride service with trip purpose freedom.
- Operated by a STAR Transit driver in a smaller vehicle.
- Passenger age requirement = 13 and above.



## Proposed Standard Service Model *Connecting you to where you want to go.*

- **Max trip length rule will depend on travel zone.**
  - City limits exceed industry standard for MOD service zone.
- **Trip origin/destination = Pre-determined travel zone.**
- **Advanced scheduling options available.**
- **Ride scheduling mobile app option.**
  - *COMING SOON*
  - We'll work with technology providers to determine realistic long-term service zone structure.
- **Service Hours:**

4:00 am – 1:00 pm	9 Hours, 1 Bus
11:00 am – 8:00 pm	9 Hours, 1 Bus



## ***Proposed Timeline***

- July 22                      Public Meeting
- August 5                    Close of Public Comment period
- Fall                            Launch Mobility on Demand service



***STAR TRANSIT***

*Connecting you to where you want to go.*

***Questions or  
Comments***



***STAR TRANSIT***

*Connecting you to where you want to go.*

***Final Thoughts***

## Weekday Service

### Demand Response *(No Changes)*

- 6:00 am – 6:00 pm 10 Buses @ 8 Hours

### COMPASS

- 4:30 am - 8:30 am 1 Bus @ 4 Hours
- 3:15 pm - 7:15 pm 1 Bus @ 4 Hours

### Mobility On Demand

- 4:00 am – 1:00 pm 1 Bus @ 9 Hours
- 11:00 am – 8:00 pm 1 Bus @ 9 Hours

**96 Hours ► 106 Total Hours Daily**

***STAR TRANSIT***

*Connecting you to where you want to go.*

***Questions or  
Comments***



***STAR TRANSIT***

*Connecting you to where you want to go.*

***Thank You!***