



STAR TRANSIT

Connecting you to where you want to go.

***Propose:
Mesquite COMPASS Service Changes***

10/23/18

- **Explain** proposed service changes.
- **Receive** input from the public about the service.



- STAR Transit is a state established public transportation agency.
- Based in Kaufman County operating as a Rural Transit District.
- Agreements in place with 10+ additional entities (as big as Mesquite and as small as Fate) with service ranging from Royce City to Navarro County.
- Serving Hutchins, Balch Springs, DeSoto and Seagoville in Dallas County.
- Stellar safety record with 65+ buses in daily operation.
- Fourth largest transit agency in Greater North Texas, all with no dedicated sales tax.

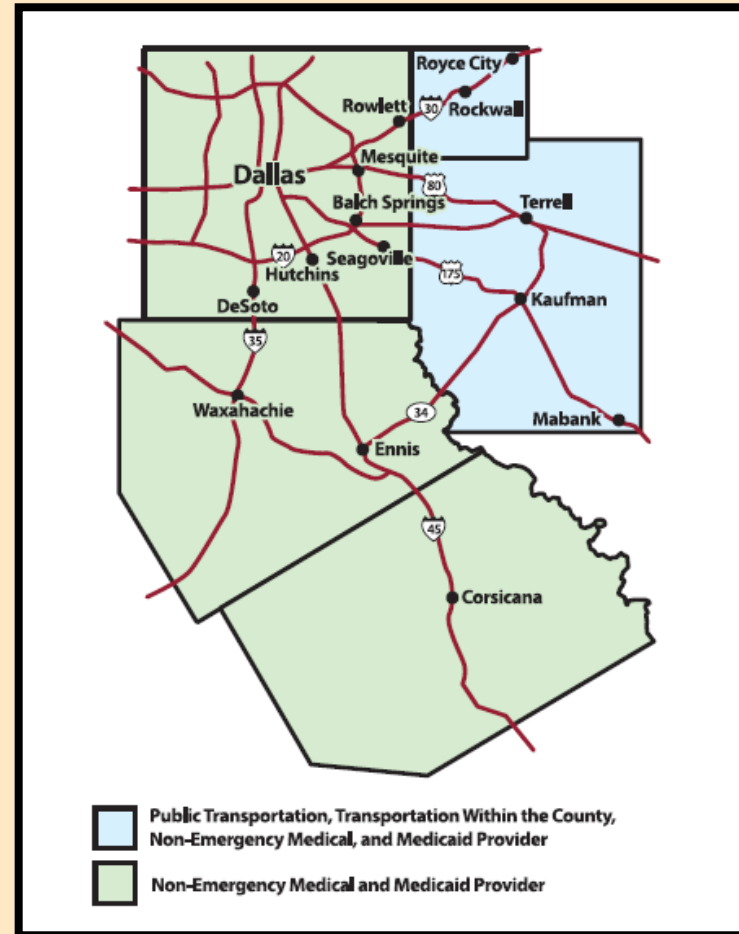


STAR Transit Service Area

STAR TRANSIT

Connecting you to where you want to go.

- Kaufman County
- Rockwall County
- Seagoville
- Mesquite
- Balch Springs
- DeSoto
- Hutchins
- Ellis County (Medicaid)
- Navarro County (Medicaid)



STAR TRANSIT

Connecting you to where you want to go.

***DART Express Bus Route 282
Mesquite COMPASS***

- This service is made possible by an agreement between DART, STAR Transit and the City of Mesquite.
- STAR Transit operates this weekday express bus service between Mesquite's Hanby Stadium and DART's Lawnview Station on the green line.
- The first bus leaves Hanby Stadium at 5:02 am & the last bus departs Lawnview Station at 6:56 pm.
- DART's fare structure is followed.

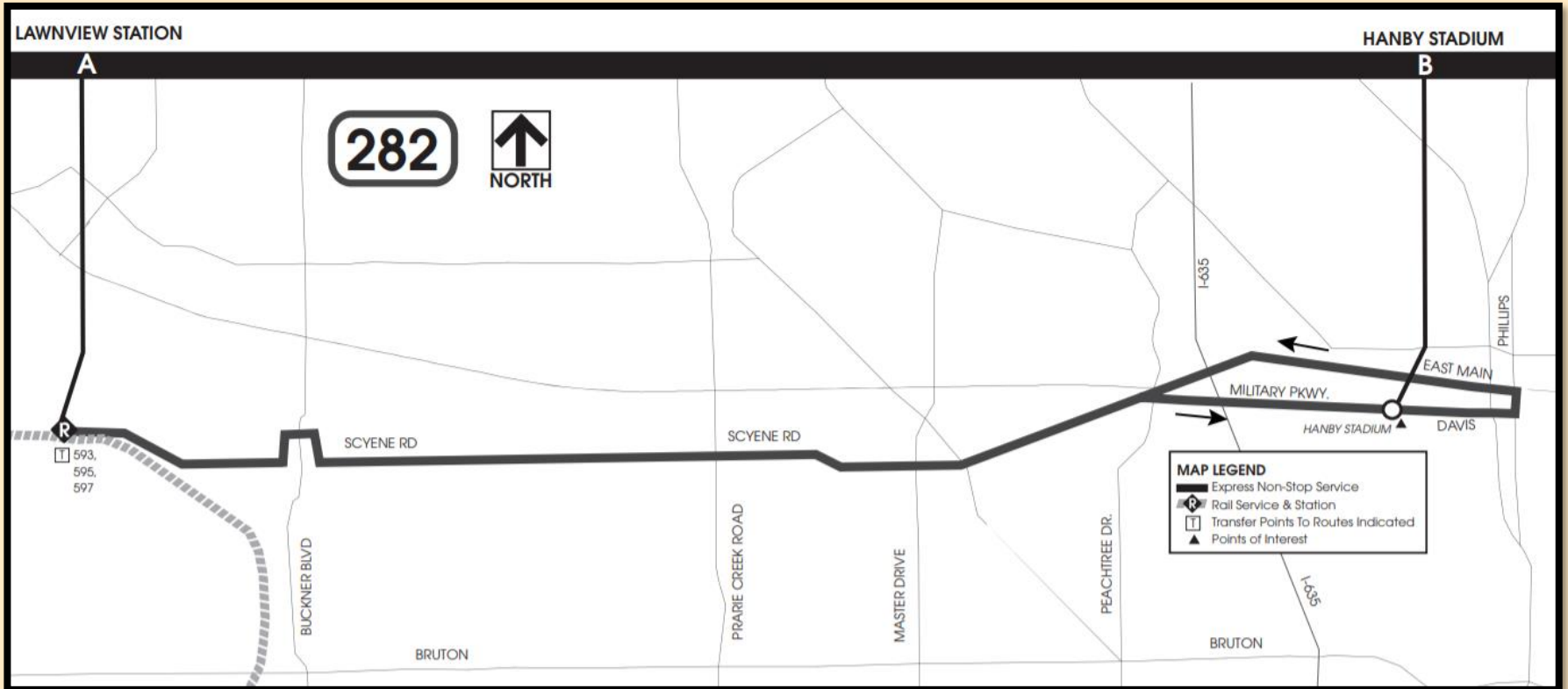
- On October 1, 2018, midday service ended.
- Peak period service continued operating every 30 minutes.



Mesquite - COMPASS

Connecting you to where you want to go.

Map



Connecting you to where you want to go.

Schedule

WEST

MESQUITE PARK & RIDE		LAWNVIEW STATION	
5:02 am	3:29 pm	5:22 am	3:51 pm
5:35 am	3:59 pm	5:55 am	4:21 pm
6:03 am	4:29 pm	6:25 am	4:51 pm
6:33 am	4:59 pm	6:55 am	5:21 pm
7:03 am	5:29 pm	7:25 am	5:51 pm
7:33 am	5:59 pm	7:55 am	6:21 pm
8:03 am	6:29 pm	8:25 am	6:51 pm
8:33 am		8:55 am	

EAST

LAWNVIEW STATION		MESQUITE PARK & RIDE	
5:39 am	3:58 pm	5:57 am	4:18 pm
6:06 am	4:34 pm	6:24 am	4:54 pm
6:39 am	5:04 pm	6:59 am	5:24 pm
7:06 am	5:34 pm	7:26 am	5:54 pm
7:36 am	6:04 pm	7:56 am	6:24 pm
8:06 am	6:38 pm	8:26 am	6:58 pm
8:36 am	6:56 pm	8:56 am	7:16 pm
9:00 am		9:20 am	

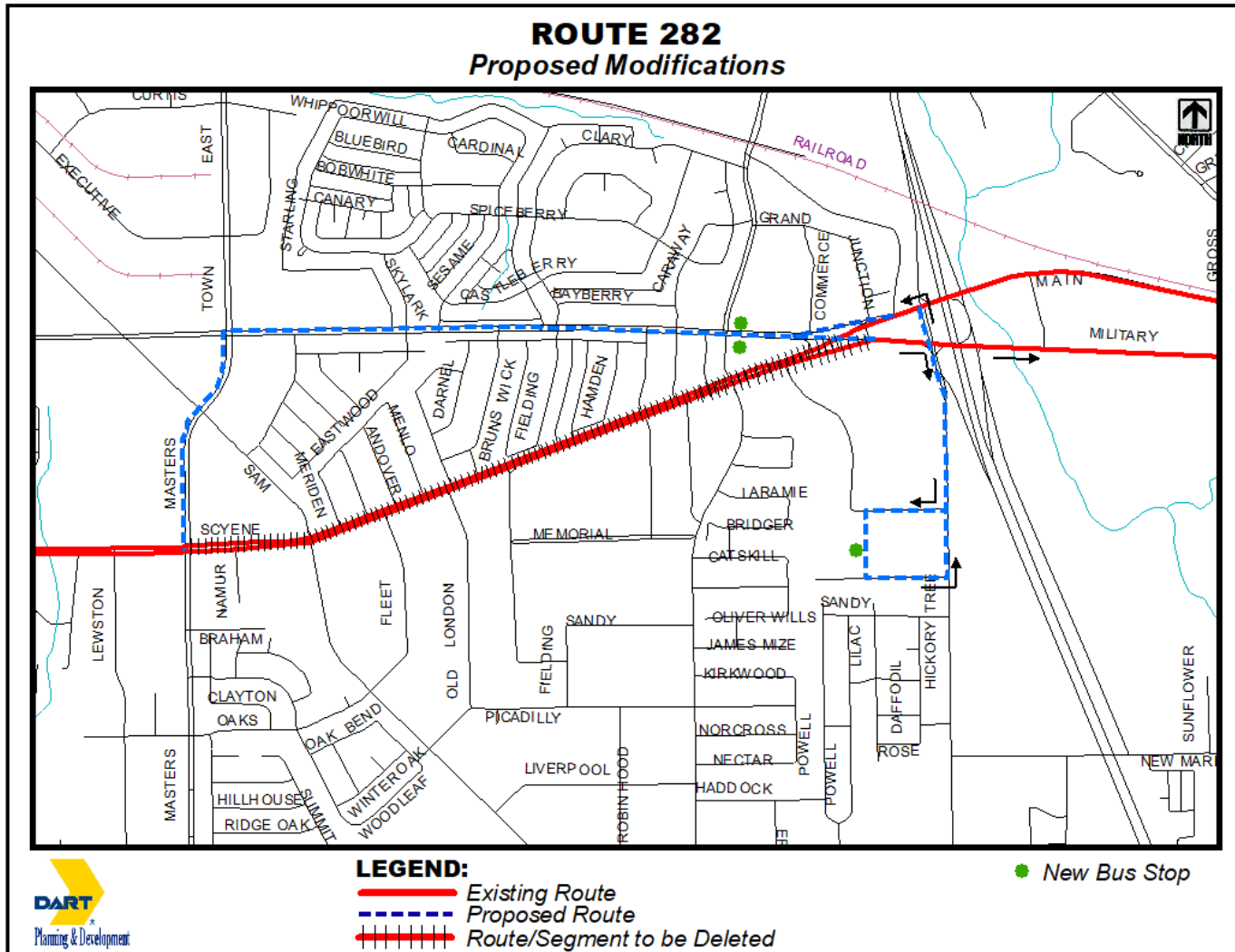
STAR TRANSIT

Connecting you to where you want to go.

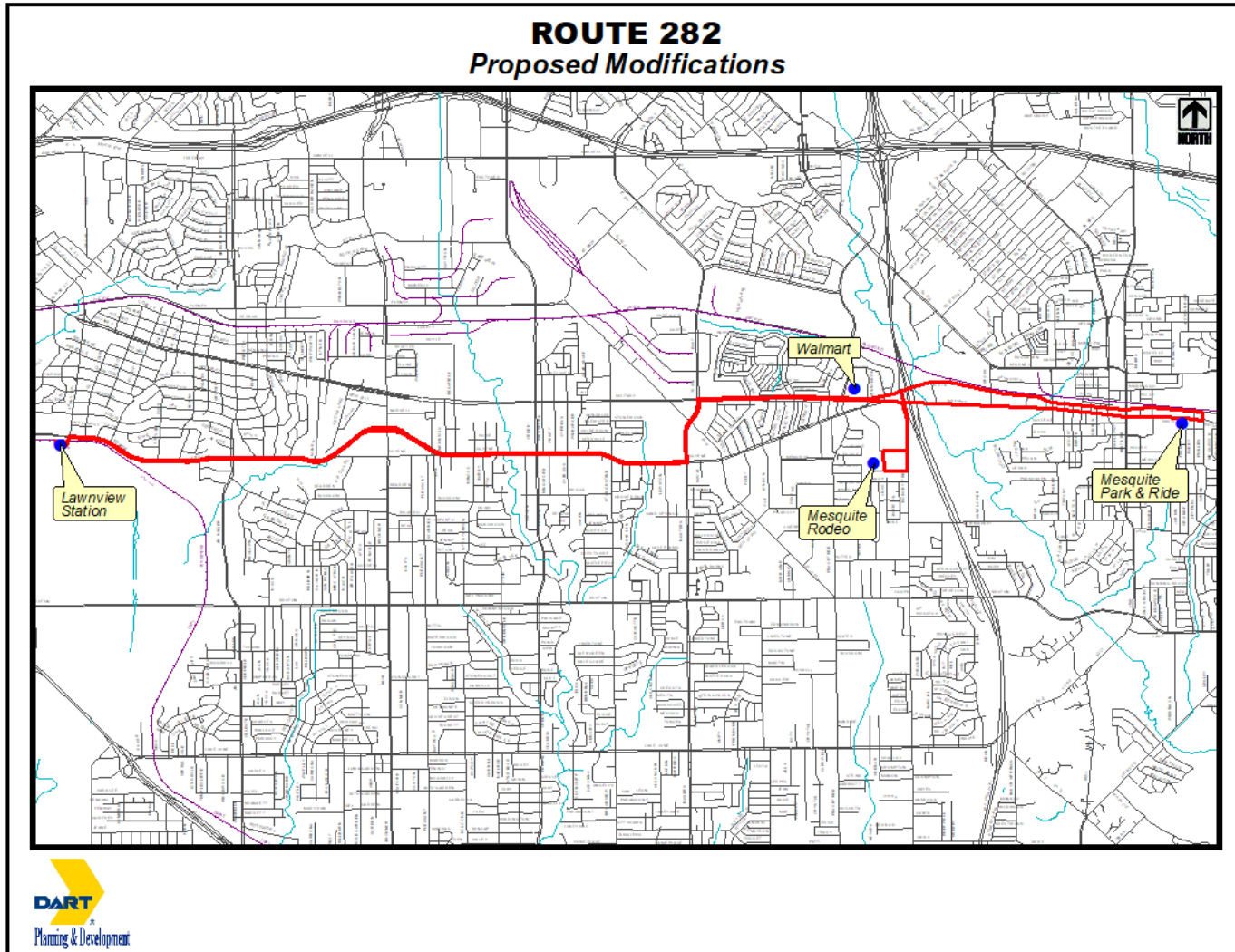
Proposed Revisions

- Add west bound stop at the Walmart Neighborhood Market (1951 Military Pkwy.).
- Add east bound stop at Griff's Hamburgers (2010 Military Pkwy).
- Add a stop at the Mesquite Rodeo.
- Revise route schedule to accommodate additional stops.

Connecting you to where you want to go.



Connecting you to where you want to go.



Westbound to Lawnview Station

Mesquite PNR	Mesquite Rodeo	Walmart Market	Lawnview Station
4:58	5:06	5:09	5:22
5:31	5:39	5:42	5:55
5:59	6:08	6:11	6:25
6:29	6:38	6:41	6:55
6:59	7:08	7:11	7:25
7:29	7:38	7:41	7:55
7:59	8:08	8:11	8:25
8:29	8:38	8:41	8:55
3:29	3:38	3:41	3:55
4:05	4:14	4:17	4:31
4:35	4:44	4:47	5:01
5:06	5:15	5:18	5:32
5:30	5:39	5:42	5:56
6:10	6:19	6:22	6:36
6:30	6:39	6:42	6:56

PM listings in Bold type

Eastbound to Mesquite PNR

Lawnview Station	Walmart Market	Mesquite Rodeo	Mesquite PNR
5:26	5:38	5:41	5:48
6:03	6:15	6:18	6:25
6:32	6:45	6:48	6:56
6:58	7:11	7:14	7:22
7:28	7:41	7:44	7:52
7:58	8:11	8:14	8:22
8:28	8:41	8:44	8:52
9:04	9:17	9:20	9:28
3:58	4:12	4:15	4:22
4:34	4:48	4:51	4:58
5:04	5:18	5:21	5:28
5:34	5:48	5:51	5:58
6:04	6:18	6:21	6:28
6:38	6:52	6:55	7:02
6:58	7:12	7:15	7:22

PM listings in Bold type

- October 23 Public Meeting
- November 6 Close of Public Comment Period
- December 3 Revisions implemented

STAR TRANSIT

Connecting you to where you want to go.

***Questions or
Comments***



STAR TRANSIT

Connecting you to where you want to go.

Thank You!